

# MARKET CHECK

## hospitality *INSIDE*

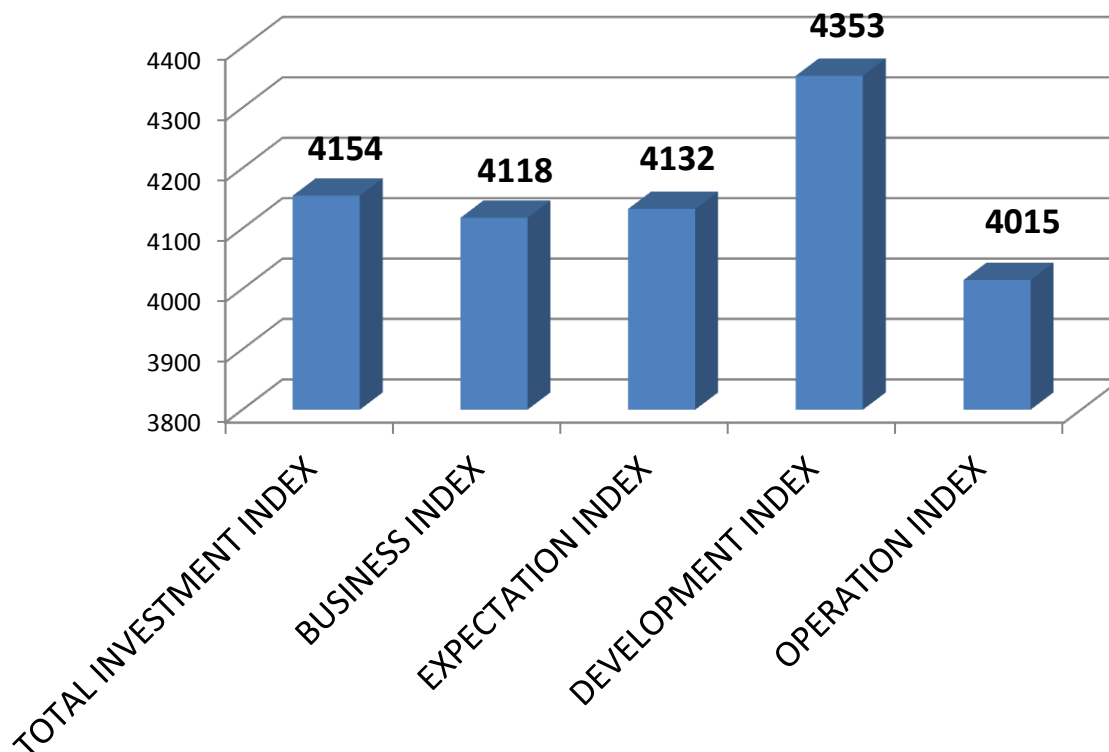
WORLD OF HOSPITALITY INFORMATION.



supported by



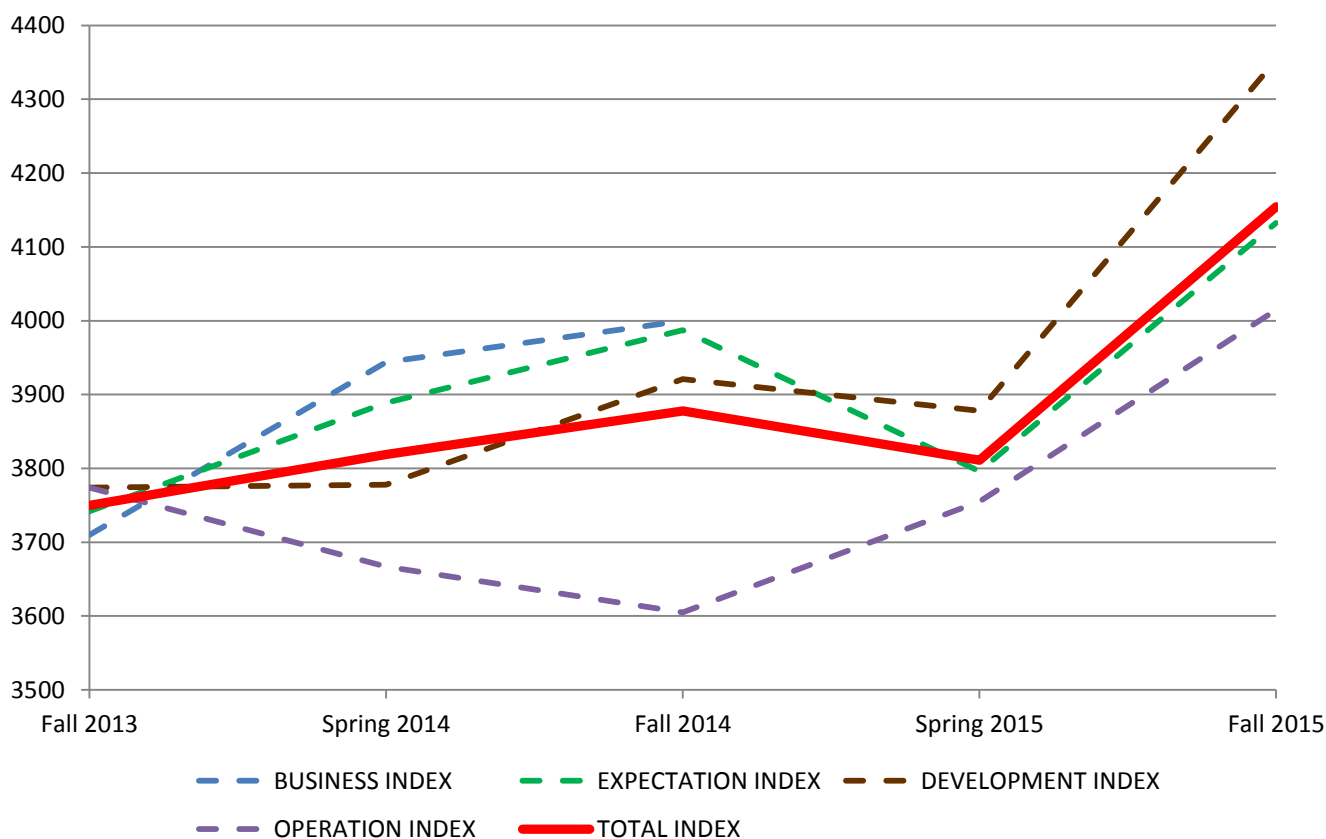
## TOTAL RESULTS Autumn 2015



<b>TOTAL INVESTMENT INDEX</b>	<i>(max. = 5000)</i>	<b>4154</b>
BUSINESS INDEX	How do you evaluate the current market situation for your own business?	4118
EXPECTATION INDEX	What are your business expectations for the next six months?	4132
DEVELOPMENT INDEX	How do you assess the current mood in the hotel industry with respect to the development of new hotel projects?	4353
OPERATION INDEX	How do you assess the current mood in the hotel industry with respect to the turnover development of hotels?	4015

The Total Investment Index broke through the 4,000 mark and with this, achieved an all-time high of 4,154 points. The increase of 9.01% in spring 2015 and 7.13% in autumn 2014 underlines the very positive mood in October 2015.

## INDEX Comparison 2013-2015

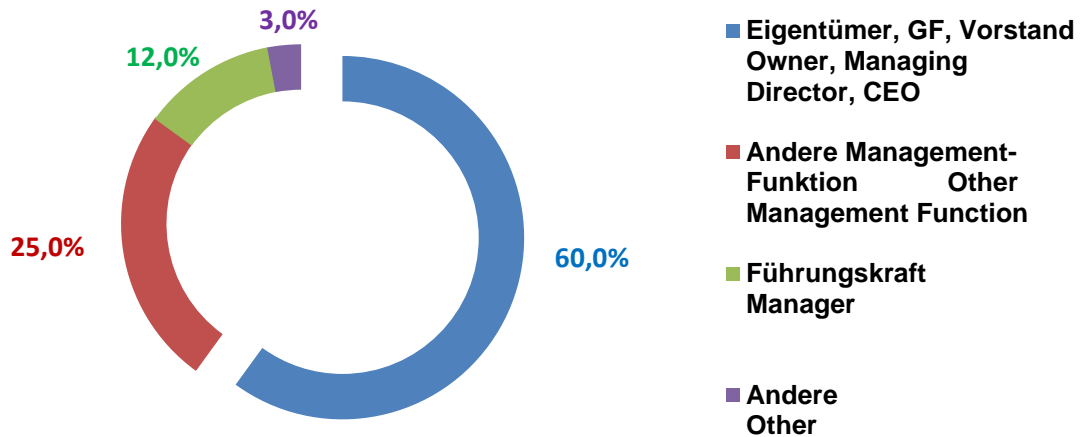


	Autumn 2013	Spring 2014	Autumn 2014	Spring 2015	Autumn 2015
BUSINESS INDEX	3710	3944	4000	3816	4118
EXPECTATION INDEX	3742	3889	3987	3796	4132
DEVELOPMENT INDEX	3774	3778	3921	3878	4353
OPERATION INDEX	3774	3667	3605	3755	4015
<b>TOTAL INDEX</b>	<b>3750</b>	<b>3819</b>	<b>3878</b>	<b>3811</b>	<b>4154</b>

The Autumn Survey 2015 closed with a clear improvement of all sub-indices. The Operation Index, which had always run contrary to the trend of the remaining indices up to now, has also joined in on the general upward trend. With 4,154 of 5,000 points, the hospitalityInside INVESTMENT BAROMETER Total Index 2013-2015 has achieved an all-time high.

## USER PROFILE Autumn 2015

### Position im Unternehmen / Position in the Company



Owner, Managing Director, CEO	60 %
Other Management Function	25 %
Manager	12 %
Other	3 %
<b>Total:</b>	<b>100,00%</b>

## Next Survey Spring 2016

The next survey will take place in March 2016. The invitation to participate complimentary will be sent out to everyone who has pre-registered in the barometer.

If you receive an invitation to participate via eMail, please follow the link to the survey and answer all questions. Only this way your assessment will be included in the entire result and you will be included in the list for the forwarding of the evaluations.

Please, recommend the participation to your esteemed colleagues and business partners.

Also on behalf of Union Investment, we thank you very much for your participation and support of this project and look forward to your next evaluation on the hotel market.

At our joint stand "World of Hospitality" at ITB Berlin 2016 you will have the chance to join the next survey "live", at a specially designed terminal. Visit us in Hall 9 / 109 and meet your colleagues there.

Maria Pütz-Willems  
Editor in Chief  
hospitalityInside.com

Michael Willems  
Managing Director  
HospitalityInside GmbH